

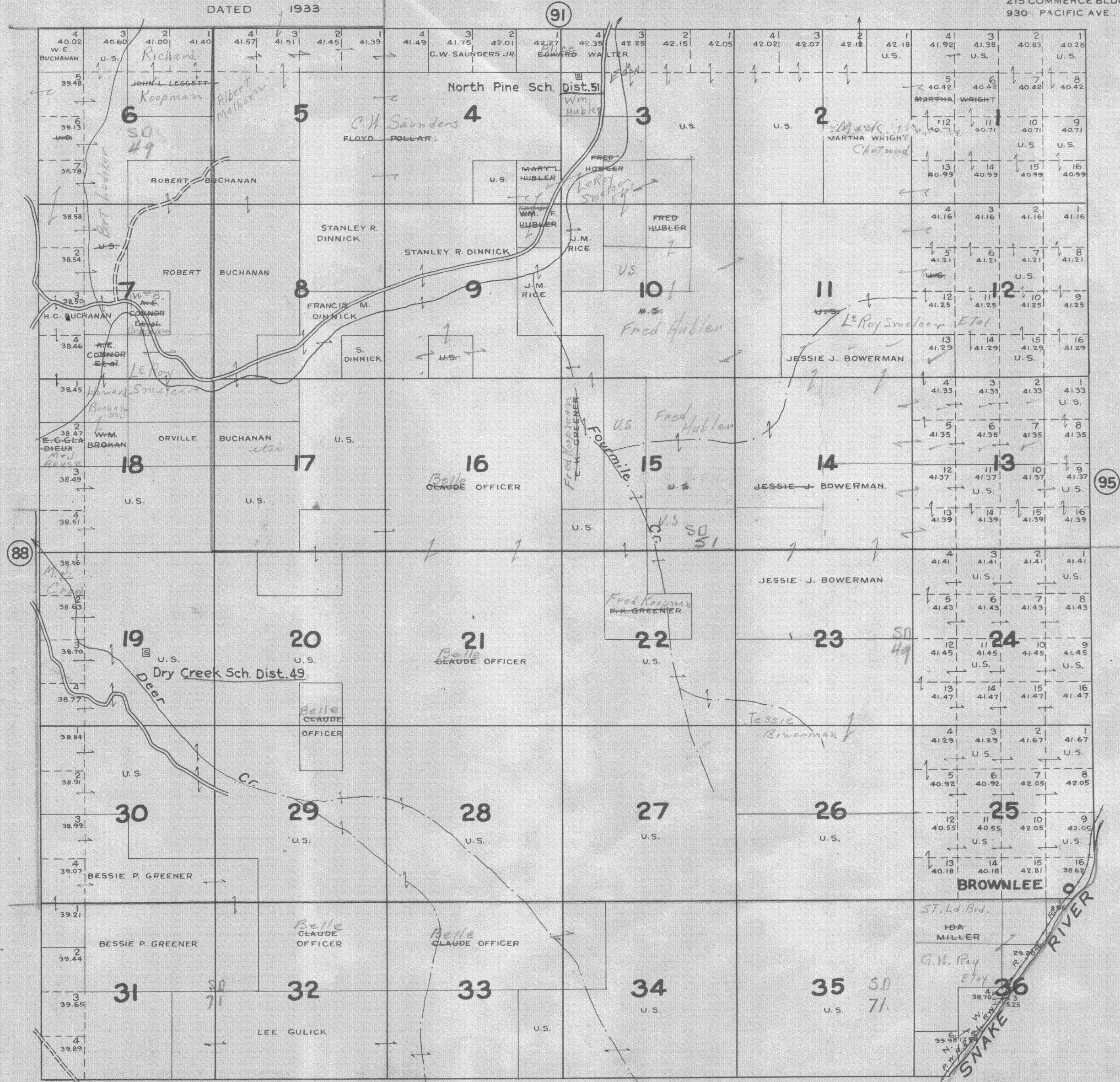
TOWNSHIP 8 S., RANGE 47 E.W. M.

SCALE 2 IN. 1 MILE

DATED 1933

BAKER COUNTY, OREGON

CHAS. F. METSKER, CIVIL ENGINEER
215 COMMERCE BLDG. PORTLAND, OREGON
930 PACIFIC AVE. TACOMA, WASHINGTON



- LEGEND-**
- PAVED ROADS
 - STATE HIGHWAYS
 - GRAVELED ROADS
 - DIRT ROADS
 - INFERIOR ROADS
 - RAILROADS
 - TRAILS
 - INTERMITTENT CREEKS
 - SCHOOLS